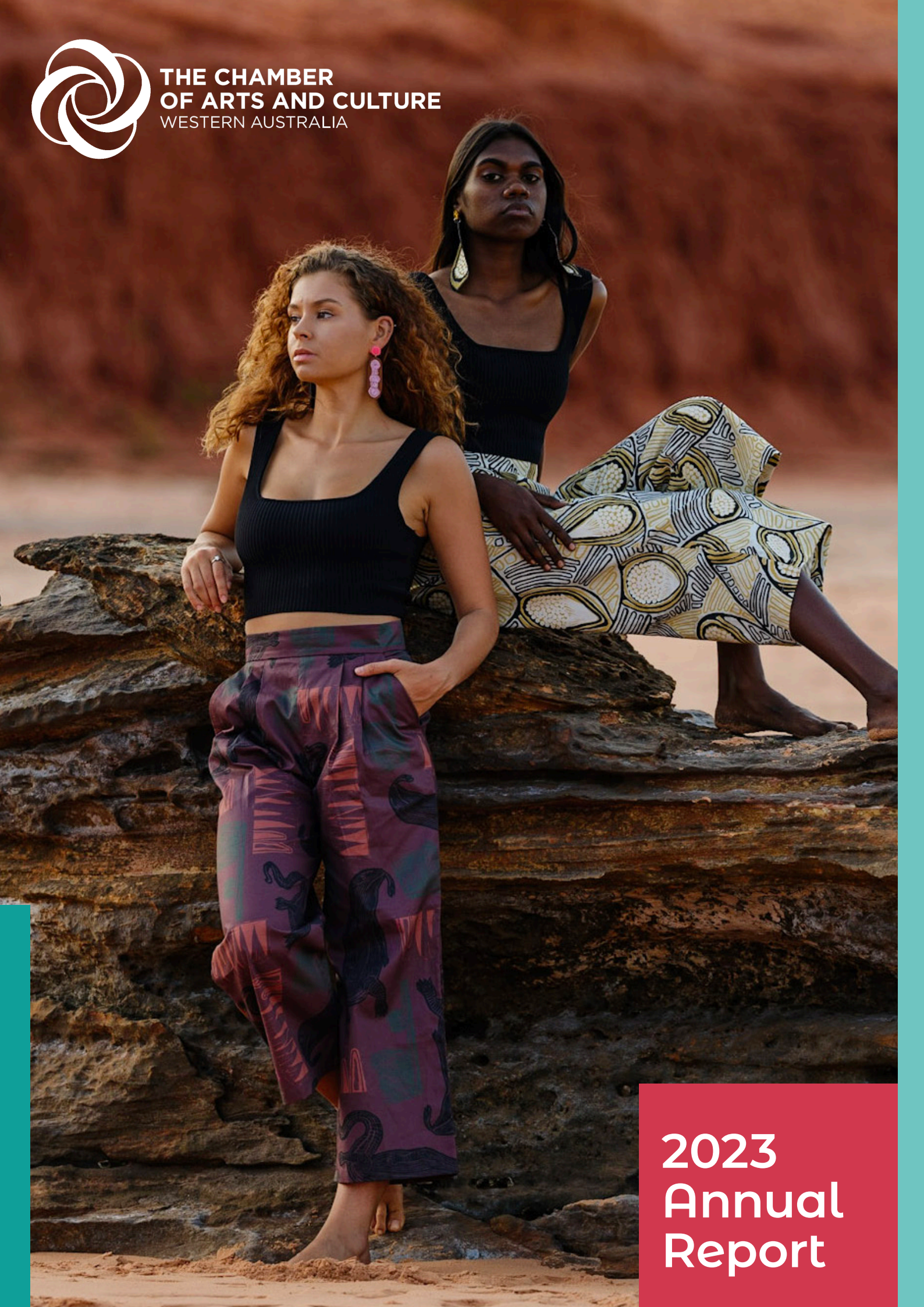




**THE CHAMBER
OF ARTS AND CULTURE**
WESTERN AUSTRALIA



**2023
Annual
Report**

Ngala kaaditj Whadjuk Noongar moort keyen kaadak nidja boodja

We acknowledge Whadjuk Noongar people as the original custodians of the land on which our office sits.

The Chamber of Arts and Culture WA acknowledges Traditional Owners of Country throughout Western Australia and recognises the continuing connection to lands, waters and communities. We pay our respect to Aboriginal and Torres Strait Islander cultures; and to Elders both past and present.



TABLE OF CONTENTS

| | |
|----|-----------------------------------|
| 4 | CHAIR'S REPORT |
| 6 | ABOUT THE CHAMBER |
| 8 | THE REVIEW |
| 12 | ADVOCACY & REPRESENTATION |
| 18 | MEMBER ENGAGEMENT & COLLABORATION |
| 20 | INDUSTRY CAPACITY BUILDING |
| 30 | MEDIA & COMMUNICATIONS |
| 30 | CORPORATE SERVICES |
| 32 | PARTNERS AND SUPPORTERS |
| 34 | MEMBERS |
| 38 | GOVERNANCE & MANAGEMENT |
| 42 | FINANCIAL REPORT |

Image Left: Falcon instructs Pytho. Yajilarra Festival 23 - Winthali Story by Theatre Kimberley. Photo by Sarah Duguid Kimberley Theatre

Image Front Cover: Hayley Mulardy and Georgia King in 'Kakaji' and 'Magabala' pants. Courtesy of Nagula Jarndu and Photographer Michael Torres. With permission from Regional Arts WA.

Chair's Report

June Moorhouse

Chair, Chamber of Arts and Culture WA



Kaya friends,

It's interesting to write this on the cusp of significant change for the Chamber. I am reflecting on what has been a challenging and inward-focused year for the organisation, out of which we announce ambitious plans for an increasingly outward-looking organisation. It's a very exciting time in the Chamber's history.

Although reviewing every aspect of the organisation was the Board's major task this year, this report elucidates how well-served members were with ongoing advocacy, representation in state and national arenas, important new services established, excellent communication maintained and critical leadership initiatives. We are particularly pleased that the Reconciliation Principles developed through our RAP RING events led by cultural Elders Barry McGuire and Carol Innes AO, offer an important starting point for the thoughtful organisational change that so many members asked for and are enacting in different ways.

Many of the achievements of the past year are due to the dedicated efforts of staff, led for much of the year by Executive Director Kim Jameson. Of special note, Kim drove the partnerships that have resulted in the Better Business Hub, providing practical benefits in HR and industrial advice through CCIWA, financial and superannuation planning through Media Super and counselling and mental health support through Access EAP, in partnership with FutureNow. The Board is proud that these much-needed resources are now accessible to Chamber members.

We were so lucky to welcome back Kelly Reid who has been outstanding in coordinating activities and keeping so many balls in the air with Natalie Norella since Kim's departure.

The review did dominate our year, and it was time well spent. Strategic advisors Creative Economy led us through a rigorous process that was well informed by stakeholder consultation, extensive research, consideration of our operating context and a thorough examination of the Chamber's potential to achieve a sustainable business model. I am extremely grateful for the talent and commitment of Helene George and the team at Creative Economy. They kept us real, future-focused and strategic in our thinking.

I also want to acknowledge and thank the Board for their dedicated and, at times intense engagement in the review process, and their willingness to hear each other out, debate and share the joy of refining our vision and dreaming big. Every Board member is passionate about this sector and the Chamber's role!

We thank the Board members and staff who left the Chamber this year for their efforts. Thank you to Phil Thick for his years of service as Chair of the Chamber and his continued support of our activities.

We are indebted to the partners who supported us throughout the year - the Department of Local Government, Sport and Cultural Industries, Lotterywest and Minderoo Foundation for funding the review, understanding the challenges and making way for the opportunities. And to those who assisted us to deliver programs of relevance for the sector, along with the day-to-day advocacy and support of our members.

Finally, I want to thank the members. Your continuing engagement and encouragement through this 'inward' year has been so heartening to all of us. It has inspired the planning of the future 'outward' journey and we can't wait to share it with you!

Boordawan

A handwritten signature in black ink that reads "June Moorhouse".

About the Chamber

STATEMENT OF PURPOSE

The Chamber of Arts and Culture WA is the peak body that champions the essential place of arts, cultural and creative industries for everyone, everywhere across WA.

We do this by leading a collective voice, demonstrating the value of arts and cultural experiences, and by influencing policy to leverage investment for a thriving sector.

STRATEGIC GOALS

The WA community values cultural prosperity through its engagement in arts and culture.

A thriving arts and culture sector with artists and arts workers making a good living.

Arts and culture are integrated in policy across agencies and all tiers of government.

The richness of WA's cultural diversity and its regions are recognised nationally and internationally.

VALUES

Inclusion | cultural diversity and sector diversity

Collaboration | shared learning and resources, effective partnerships

Leadership | receptive, strategic, reasoned and creative

Integrity | open and transparent behaviour and respectful relationships

Image: Sensorium Theatre: Wonderbox. Commissioned by Perth. Festival. Produced by Performing Lines WA. Photo credit: Jessica Wyld.



The Review

As reported at the 2022 AGM, the Chamber Board sought to conduct a comprehensive review of the organisation when it became obvious that a shift to our business model and method of operation was required.

Historically, over 80% of our organisational revenue has come from grants and sponsorships, with paid events and membership fees making up the remaining portion. We have also relied on generous in-kind support. This was no longer sustainable, and we are grateful that financial assistance from DLGSC, Lotterywest and Minderoo Foundation enabled an in-depth examination of the Chamber's situation and possible future.

The review was an invaluable opportunity to reset our course, based on a detailed analysis of the Chamber's operating context and the considered feedback of our members and stakeholders. It has been a demanding process, but one that the Board and staff embraced with unwavering commitment. We are indebted to the members who have remained engaged and continued to express their enthusiasm and support for a renewed, viable Chamber.

Following a highly competitive Expression of Interest process, we enlisted the strategic advisory practice Creative Economy to conduct the review. They thoroughly examined our organisation focusing on impact, achievements, membership engagement and financial performance against our stated purpose and strategic context.

Key finding from the Review

- The Chamber serves as a unifying voice within, and for, the arts and culture sector, earning us high national recognition.
- Our membership base is highly engaged but static, and does not fully reflect the diversity of our community.
- Our organisational purpose lacks clarity and meaning.
- Our impact on increasing arts funding in WA has been limited.
- We have consistently delivered policy submissions advocating for the sector at the state and national levels.
- Our initiatives have addressed sector needs.
- We have a strong track record of providing professional development events for the sector.
- Our corporate leadership has diminished over time.
- Our average annual turnover has been suboptimal for the scale of our operations, and there has been no focus on developing the Chamber as a financially viable business.

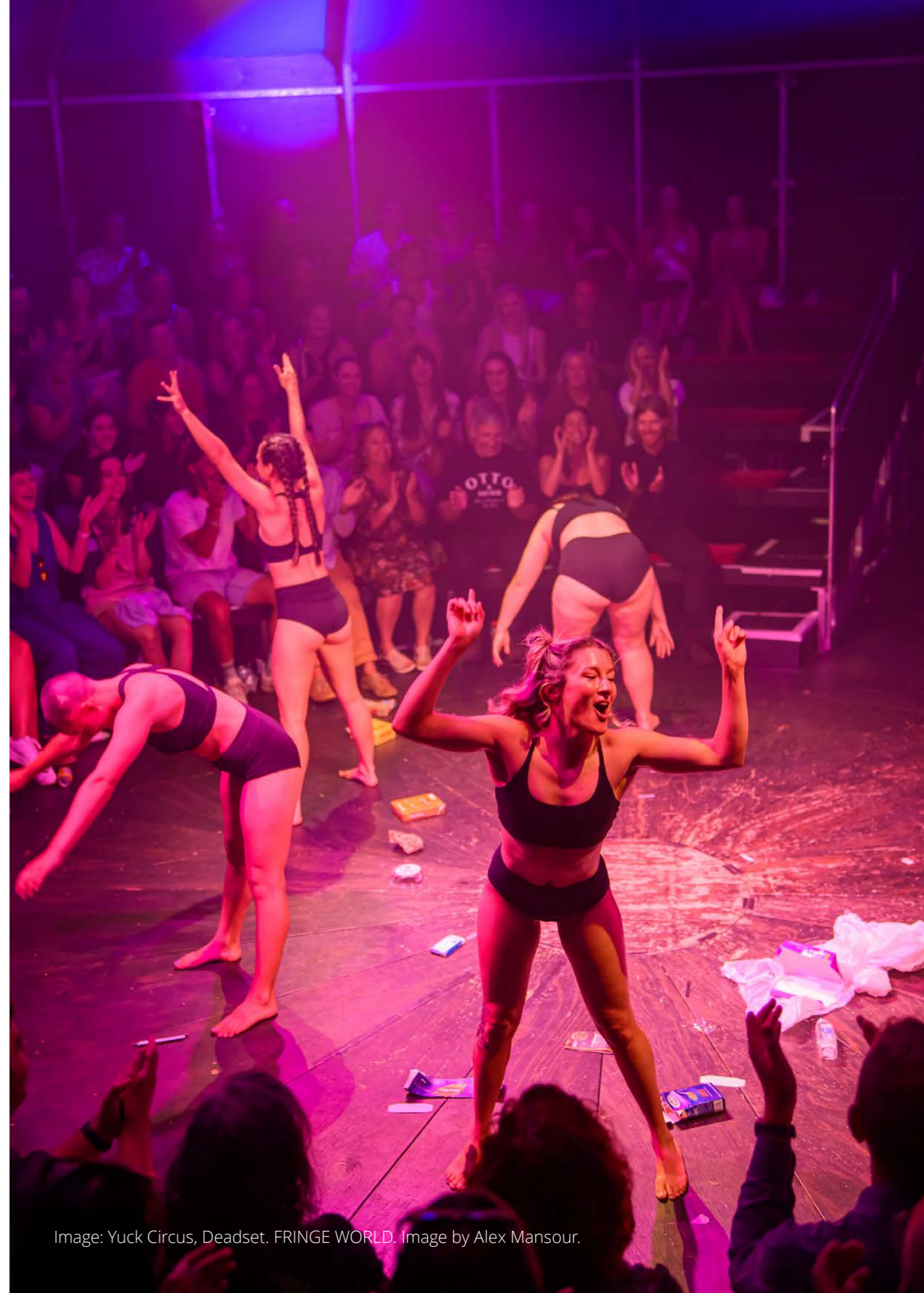


Image: Yuck Circus, Deadset. FRINGE WORLD. Image by Alex Mansour.

New Strategic Business Plan

Based on this analysis, extensive stakeholder consultations and consideration of industry trends and opportunities, the Board, with Creative Economy, developed and endorsed a new Strategic Business Plan. It embodies our renewed purpose, values and impact areas.

The plan marks a significant shift in our approach to fully capitalise on our unique position as the state's peak body for arts, culture and creative industries. It requires us to be more proactive and entrepreneurial in delivering leadership, advocacy, representation and capacity-building, and industry development.

Our commitment to influencing policy and driving industry development requires dynamic relationships with the Department of Local Government, Sport and Cultural Industries, other government departments and agencies, at local, state and national levels, and business and commercial sectors. To confront sector challenges and achieve long-term change we have developed a diversified revenue model that ensures the longevity of our organisation.

The Chamber's new strategy is a call to action. It summons us to lead, collaborate and demonstrate the profound impact of arts and culture on personal wellbeing, community cohesion and economic prosperity.

Project Advisory Group

The Chamber acknowledges the valuable contribution and advice of the Review Project Advisory Group.

- Jessica Anderson, Minderoo Foundation
- Andrew Baker, Minderoo Foundation
- Carolyn Chard, WA Opera
- Alana Culverhouse, Perth Institute of Contemporary Arts
- Rob Didcoe, Independent
- Luke Donohoe, The Choral Collective
- Matt Fulton, SportWest
- Lydia Gardiner, Youth Representative
- Jo Malone, Independent
- Rebecca Taylor, City of Perth



The Art Gallery of Western Australia, Concourse. Photo: Rebecca Mansell.

Advocacy and Representation

Over the past 12 months, the Chamber has championed the interests of the arts and culture sector by actively engaging with key stakeholders and advocating for policies that address the challenges and complex issues that impact our industry.

State Focus

The increased cost of operating

Financial sustainability remains a pressing concern with negative growth in revenue and funding resulting in operating deficits for many.

The capacity of many organisations to deliver core functions and invest in innovative practices has been impacted by surging energy, insurance, recruitment and travel costs. While caps on spending on indirect costs for the Not-For-Profit sector have had a negative impact.

Addressing funding challenges is pivotal to the sustainability of the sector. We continue to call for indexation of funding by the Government, a living wage for artists, and government-backed insurance policies to support long-term planning and sustainability. Harmonised investment frameworks that align with shared objectives and outcomes across government agencies are also needed to reduce red tape.



Ensuring fair funding decisions

Funding underpins the operations of many of our current members and we are deeply committed to advocating for fair and transparent decision processes in all arts and cultural funding arrangements. During the Arts Organisations Investment Program (AOIP) process, we represented our members' view that investment should support a healthy, diverse sector and that a clearly articulated strategy from the Department of Local Government, Sports and Cultural Industries would assist in transparent decision-making and help create a more equitable landscape for all.

Image this page: Little Darlings. FRINGE WORLD. Photo by Jarrad Seng.

Image Left: Mr Kimberley. Local Derby kid Xavier learns how to use the camera from Cinematographer Jake Blackburn. Photography and © Marlanie Haerewa.

Advocacy and Representation

State Focus

COVID-19 Management and Response

The COVID-19 pandemic unveiled deep-seated vulnerabilities within the sector and underscored the urgent need for initiatives to improve its resilience. The widespread exhaustion stemming from the post-pandemic period poses a significant risk to an entire generation of artists and arts leaders.

The Chamber submitted a comprehensive response to the Western Australian Government's independent 'Review of WA's COVID-19 Management and Response'. Our response was informed by insights gathered from a member survey, allowing us to present a unified and impactful perspective on the challenges faced by our sector.

Infrastructure for growth

Recognising the imminent growth of Western Australia's population, our state's cultural infrastructure is a pressing concern. Our response to the State Infrastructure Strategy 'Foundations for a Stronger Tomorrow', emphasised the urgent need for improved accommodation and asset monitoring within the arts sector. With a 60% population increase on the horizon, existing infrastructure must be prepared to handle the additional pressure.

Strengthening Indigenous heritage and culture

We collaborated with relevant agencies in response to the Aboriginal and Torres Strait Islander Visual Arts and Crafts report. Our submission called for establishing stronger Indigenous Cultural Intellectual Property laws, safeguarding Indigenous communities' rich heritage, culture and art. We also advocated for a mandatory labelling system to help consumers identify authentic Aboriginal art and foster deeper connections between retailers and First Nation communities, promoting tolerance and authentic cultural experiences.

Legislative frameworks

The Chamber met with consultants to discuss the Arts and Culture Trust development and participated in the Agency Capability Review of the Department of Local Government, Sport and Cultural Industries.

Image Right: Circus WA Training. Jess and Arlo on trapeze. Photo by Rachel Collier.



Advocacy and Representation

The Chamber remained active in federal advocacy efforts over the past 12 months, backing cultural policy and initiatives that benefit both our members and the broader cultural landscape in Australia.

Federal Focus

Revive policy

The Commonwealth government kicked off the year by announcing the consultation process for a renewed National Cultural Policy.

Following consultation with members, our submission focused on how the National Cultural Policy can support Australia to become a cultural powerhouse whose creativity is locally loved, nationally valued and globally influential.

We welcomed 'Revive: a place for every story, a story for every place', as a ground-breaking shift in the industry's narrative, moving from a narrow economic perspective to a values-driven approach that recognises the entire cultural ecosystem.

Executive Director, Kim Jameson, attended the policy's launch, stating that it marked a positive step forward for an industry that had faced challenges for many years. Our focus was on ensuring that all tiers of government commit to working within an arts and culture policy framework, as well as on monitoring the policy's implementation.

We were pleased with the additional policy commitments, including an Arts and Disability Policy Plan within Australia's Disability Strategy, a scoping study to assess workforce challenges and skills needs, and the development of a Multicultural Framework Review. These commitments aim to sustain the workforce, strengthen social cohesion and ensure our cultural sector reflects contemporary Australia.



Engagement with Commonwealth Arts Minister

A Town Hall meeting with the commonwealth Arts Minister, The Hon. Tony Burke, MP was held in August and saw a significant turnout of our members and, in November, we hosted a roundtable meeting with Minister Burke. This meeting allowed our members to address their questions and concerns directly with the Minister. Minister Burke highlighted the reinstatement of coordinated meetings between the Cultural Ministers' group and the Australian Local Government Association, emphasising the importance of a connected policy structure. Two key ideas were discussed during this meeting: establishing an independent Indigenous body and an independent body, similar to an ombudsman for the arts.

National Job Summit

We participated as the only state organisation invited to the Arts Employment National Roundtable discussion, which prepared Minister Burke for the National Job Summit.

Commonwealth Treasury meeting

We met with the Commonwealth Treasury to discuss the performance of the arts and culture sector in Western Australia. This discussion covered many topics, including First Nations initiatives, economic snapshots, the operating environment, industry capacity and labour force needs.

International touring

We participated in a roundtable discussion led by the State Director for the Department of Foreign Affairs and Trade and representatives from the industry focused on strengthening international relations and networks. Discussions ranged from visa support to investment.

We participated in roundtables with the Special Envoy for the Arts, Susan Templeman MP and with Nicholas Moore AO Special Envoy for Southeast Asia, in a consultation that informed 'Invested: Australia's Southeast Asia Economic Strategy to 2040'. This strategy identifies creative industries as one of ten (10) key opportunity focus areas.

Image: The Cast of Lé Nør [the rain]. Photo credit: Daniel Grant The Last Great Hunt

Member Engagement

Cultural Executives Group

We hosted six Cultural Executive Group (CEG) meetings this year, with participants discussing critical issues impacting the sector and the Chamber.

The CEG is an invaluable forum to keep our member organisations informed of our activities and to canvas feedback on our plans.

Guest speakers this year included the Department of Local Government, Sport and Cultural Industries (DLGSC) Executive Director, Shelagh Magadza; Marty Cunningham, DLGSC Director Investment, Research and Policy; PAC Australia CEO, Katherine Connor; Helene George from Creative Economy; and Vanessa Stasiw, Reconciliation Programs Manager at Reconciliation WA.

Key Issues on the group's agenda this year included the National Cultural Policy, the Chamber Review, and the state's investment in the sector.

Collaboration

Partner Events

In November we partnered with Seesaw Magazine and Wesfarmers Arts to celebrate Seesaw's five year anniversary.

Then in June we partnered with Minderoo Foundation to deliver the thought-leadership event ***A Critical Conversation on Gender Inequality in the Arts***, at which Nicola Grayson, Head of Public Affairs at Creative Australia, spoke about the New Centre for Arts and Entertainment Workplaces (now Creative Workplaces), and Chamber Chair, June Moorhouse joined panellists Dr Jo Pollitt and Dr Pilar Kasat to discuss gender inequality in the arts.



Industry Capacity Building

This year, we developed and delivered a range of programs to support personal and organisational sustainability.

The Better Business Hub: superannuation, pensions and retirement planning support

Our Better Business Partner, Media Super provides our members with tailored superannuation guidance and support to help streamline business processes and increase organisational effectiveness. The program aims to make superannuation administration and compliance as simple and easy as possible for employers. The program also provides retirement planning and support for employees and contractors to maximise their superannuation investments.

In addition to providing tailored advice and support to our members, Media Super partnered with the Chamber on two member events this year focused on health and wellbeing:

- The launch event in July of the Chamber's 2022 research into the *Financial and Wellbeing Impacts of COVID on the Arts and Culture sector* and an industry discussion on the need for a Health and Wellbeing Framework for the sector; and,
- The launch in October of our Member Assistance Program and an industry presentation on financial planning and stapled super funds.



Images this page and pages 18 & 19: Gender Inequality in the Arts event. Minderoo Foundation. Photo by Emma Dolzadelli



Member Assistance Program: mental health and wellbeing support hub

We are committed to supporting the mental, emotional, and personal wellbeing of the sector.

With support from Lotterywest and FutureNow, we launched our Member Assistance Program in October, providing professional and confidential counselling services for eligible members and their families.

This service provides support for members experiencing mental health issues, ensures those working in the sector can access help when they need it, and contributes to the foundation of a resilient, connected and valued workforce.

Business of the Arts: HR, IR and WHS support hub

To support sector sustainability, resilience and responsiveness, we partnered with the Chamber of Commerce and Industry WA (CCIWA) to offer tailored guidance and assistance to small-to-medium organisations on HR, IR and WHS issues.

The Business of the Arts Hub provides Chamber members with access to range of CCIWA's member resources including the Employee Relations Advice Centre, eLearning Library and Webinars, and discounted member rates for training and commercial consulting services.

Blueback. Mia Wasikowska as Abby and Liz Alexander as Older Dora with Director Robert Connolly and DOP Andrew Commis. Photography by David Dare Parker. © Arenamedia Pty Ltd. Courtesy of Screenwest.

Cultural Connections Capacity Building Program

The Cultural Connections Program, led by Dr. Christine Scoggin, developed a strategic approach to developing and delivering Capacity Building programs.

From a comprehensive audit of existing capacity-building services within the sector, a survey on sector needs, and interviews with representatives from peak bodies and service organisations, a thematic framework of six areas of need was developed:

- Orienting towards the future
- Deepening our cultural dialogue
- Creating public value
- Building successful partnerships
- Developing new audiences
- Improving organisational governance

Using this thematic framework and with input from the Cultural Connections Working Group, capacity building initiatives were delivered across multiple platforms and via diverse modes of delivery.

With the aim of building sector, organisation and personal sustainability, resilience, and responsiveness the program included:

- Six (6) in-person, online and hybrid events on organisational governance, principles of reconciliation, WHS legislation, mental health and wellbeing, and ethical partnerships.
- A series of articles and podcasts in partnership with Seesaw Magazine focusing on the future relationship between the arts and the environment, health and wellbeing, and tourism.
- The development of a set of Arts and Culture Sector Reconciliation Action Plan Principles.
- Peer-to-peer learning between organisations and individuals, with six organisations supported to deliver their own capacity building initiatives via a devolved funding initiative.

The findings of the audit, survey and interviews were published in the report 'Audit of capacity building needs and initiatives across the WA Arts and Culture sector'.

The Cultural Connections Project was made possible with funding from Lotterywest.

CAN Making Time 2022. Photo by Michelle Troop. Courtesy of Community Arts Network





Cultural Connections Programming 2023

**Orienting
Towards the
Future Podcast
Series.**

Let's talk about the future: Can the arts help save the planet?

With journalist Meri Fatin and guests Professor Peter Newman, Professor of Sustainability at Curtin University, actor, director, producer and Research Supervisor at Western Australian Academy of Performing Arts (ECU), Dr. Renee Newman, and Oron Catts, artist, researcher, designer, curator and co-founder of SymbioticA.

Let's talk about the future: Better health and wellbeing

With Meri Fatin and guests psychologist Dr Shona Erskine and Dr Christina Davies, director of the Centre for Arts, Mental Health and Wellbeing WA.

Let's talk about the future: Arts and tourism

With Meri Fatin and guests Di Bain, Deputy Lord Mayor of City Perth and Chair of Tourism Western Australia, Mark Howett, Director of Place Management for Arts and Culture Trust, and Helen Curtis, Founder and Director of creative consultancy, Apparatus.

Professional Development and Capacity Building Events 2023

- Governance Masterclass
- RAP RING Workshops 2 and 3
- Practical Steps to Incorporating new WHS Legislation
- Member Assistance Program Launch
- Navigating Ethics in Arts Partnerships Summit

Devolved Funding Recipients and Capacity Building Initiatives

- Aboriginal Art Centre Hub of Western Australia (AACHWA): Oral history workshops
- Community Arts Network: Making Time Conference
- Regional Arts WA: Creative Leadership Program: Module 3
- West Australian Music Industry Association Inc: WAM workshops program
- Australian Museums and Galleries Association Western Australia (AMaGA WA): Practical advocacy toolkit and training for galleries and museums

Image: Julieanne Farmer, Rosie Frecheville, Sally Butler and Delilah Shepherd attend a workshop at the AACHWA Our Business Aboriginal Art Centre Forum 2022. Aboriginal Learning Centre, Geraldton TAFE. Photographer: Dragonfly Media. Photo courtesy of AACHWA.

Cultural Connections Highlight

RAP RING Principles

An action-based reconciliation framework

In partnership with Reconciliation WA, we convened a Reconciliation Action Plan (RAP) Reconciliation Industry Network Group (RING) for the arts and culture sector and hosted a series of facilitated conversations with this group around action-based reconciliation.

The conversations, known as RAP RINGS, were led by Barry McGuire and Carol Innes AO.

Over three sessions – Imagining; Exploring; Embedding – the participating organisations were challenged and supported to explore practical ways the sector and their organisations could and should work towards reconciliation.

From there, a series of Principles were developed: RELATIONSHIPS. RESPECT. OPPORTUNITY.

From these guiding principles, a series of actions were distilled to put intention into action.



"It's a process where we walk together in a way that recognises each and every one of what we bring, whether it's our experiences, our generosity, our skills, experience, and our minds and our hearts to develop something, create something, and present something that changes people's minds."

– Carol Innes AO

Cultural Connections Working Group

We thank Dr. Chris Scoggin for leading the program for the Chamber, and the working group for their guidance and support.

Working Group Members

- Livia Carré, West Australian Music
- Philippa Maughan, Regional Arts WA
- Jamie McGleave, Propel Youth Arts
- Ann-Marie Ryan, FutureNow
- Jane King, John Curtin Gallery
- Karin Burrill, Department of Local Government, Sport and Cultural Industries
- Claire White, Department of Local Government, Sport and Cultural Industries



Image Left: Barry McGuire leading the conversation during a RAP RING Workshop.

Image this page: Regional Arts WA. 'Coalesce' exhibition at The Goods Shed. Photo by Rebecca Marshall

Media and Communications

Our media and communication strategies advance our advocacy, promote our member activities and demonstrate the value that arts and culture bring to our communities.

We remain committed to transparency in our dealings and regularly communicate with our members and stakeholders about our activities, shifts in the cultural landscape and significant government engagement with the sector.

This year, the Chamber was featured in various media stories covering a range of topics, including AOIP outcomes, the Voice to Parliament, the Organisational Review, tourism and the arts, ethical partnerships, arts activism, mental health and wellbeing in the sector, and the Australia Council of the Arts under-investment in WA programs.

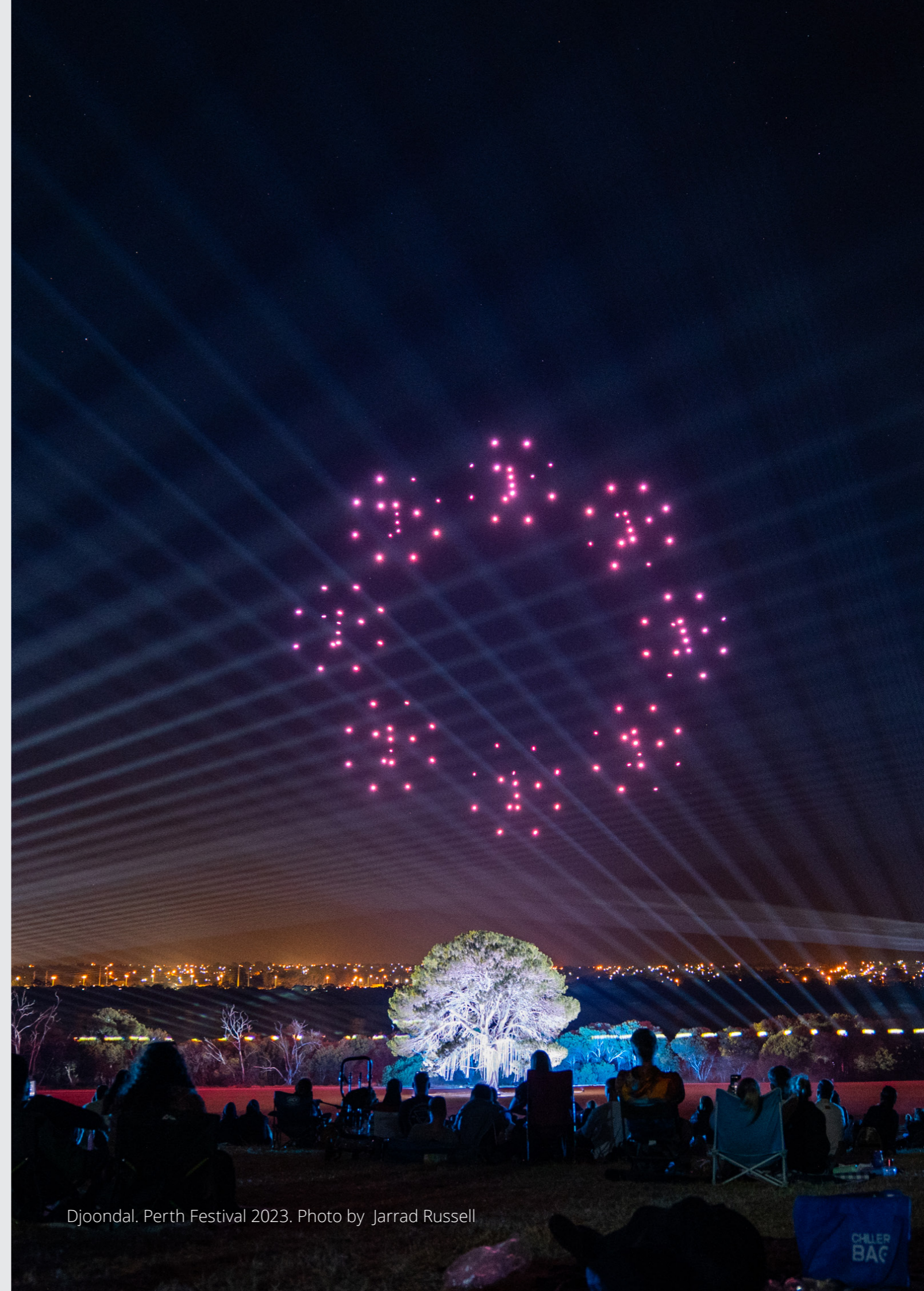
Our member and stakeholder communications included our bi-monthly newsletter, fortnightly Member News, social media channels and various event and program updates.

Corporate Services

The Chamber team relocated from Herbert Smith Freehills' QV1 offices to the Kings Complex in January 2023.

We thank Herbert Smith Freehills for housing our organisation for the past 10 years. This decade-long support totalled over a million dollars of pro bono office and event spaces, luxurious views and professional support.

We thank Performing Arts Connection Australia (PAC Australia) for opening their office space to us at Kings Complex.



Djoondal. Perth Festival 2023. Photo by Jarrad Russell



You're So Brave. Photo by Minni Karamfiles The Blue Room Theatre

Partners and Supporters

Organisational Review Partners



Better Business Partner



Keystone Partners



Cultural Connections and Capacity Building Partners



Event Partners



Members

The Chamber's membership in 2023 was made up of 211 arts and cultural organisations, individuals working and volunteering in the arts, culture and creative sectors, Local Government Authorities, businesses, and individuals who value and support a thriving art and culture sector in Western Australia.

The value and core strength of the Chamber has always been our highly engaged membership.

We thank all our members for supporting us on our journey this year.

ARTS ORGANISATIONS

Aboriginal Art Centre Hub WA
 Adrenaline Theatre Association Incorporated
 Another Test Organisation
 APPARATUS: public art and cultural services Pty Ltd
 ART ON THE MOVE
 Artgold
 Artist Relief Fund WA
 Artists Foundation of Western Australia Ltd
 Artitja Fine Art
 ARTRAGE Inc / FRINGE WORLD Festival
 Arts Margaret River Inc
 Artsource
 AUSTA WA
 Australian Baroque
 Australian Museum and Galleries Association Western Australia
 Awesome Arts Australia Ltd
 Barking Gecko Theatre
 Black Swan State Theatre Company
 Bunbury Regional Entertainment Centre
 Centre for Stories
 Ceramic Arts Association of WA
 Charlesworth Ballet Institute
 CinefestOZ
 CircuitWest Inc
 CircusWA
 ClayMake Studio
 Community Arts Network (CAN)
 Contemporary Dance Company of Western Australia

Ellis House Arts Centre
 Embroiderer's Guild of WA
 Encounter Theatre Inc
 Esperance Community Arts
 Fliptease Pty Ltd also training as Access Circus
 FORM building a state of creativity Inc.
 Freeze Frame Opera
 Fremantle Chamber Orchestra
 Fremantle Press
 Fremantle Theatre Company
 FutureNow
 GalleriesWest
 Half The Sky Limited
 History Council of Western Australia
 JCG (John Curtin Gallery)
 Kimberley Aboriginal Law and Culture Centre
 Koorliny Arts Centre
 Mandorla Art Award
 Mandurah Performing Arts Inc.
 Media Entertainment Arts Alliance
 Melville Community Arts Association
 Mundaring Arts Centre Inc
 Musica Viva
 NMTAFE
 North Midlands Project
 Performing Arts Connections Australia
 Performing Lines WA
 Perth Festival
 Perth Improvised Theatre Society Co-op

Perth International Cabaret Festival Limited
 Perth International Jazz Festival
 Perth Symphonic Chorus
 Perth Symphony Orchestra
 PICA
 Professional Film Crew of Western Australia
 Professional Historians Association (WA)
 Propel Youth Arts WA
 Regal Theatre Foundation Limited
 Regional Arts WA
 Revelation Perth Film Festival
 RTRFM 92.1
 Screenwest Australia Limited
 Sculpture at Bathers
 Seesaw Magazine
 Sensorium Theatre
 Southern Forest Arts
 Spare Parts Puppet Theatre Inc
 Strut Dance
 sweet pea
 Tease Industries Pty Ltd
 The Blue Room Theatre
 The Choral Collective
 The Farm Margaret River
 The Junction Co.
 The Last Great Hunt
 The Lester Prize
 The Literature Centre Inc.
 The West Australian Music Industry Association Inc.
 THEATRE 180
 Theatre Kimberley Incorporated

Tura New Music
 WA Youth Jazz Orchestra Association Inc.
 WA Youth Orchestra
 WA Youth Theatre Company (WAYTCo)
 WASO
 West Australian Ballet Company Inc
 West Australian Opera
 Western Australian Academy of Performing Arts
 Writing WA
 Yirra Yaakin Theatre Company

INDIVIDUALS

Áine Whelan
 Alan Dodge AM CitWA
 Ali Martin
 Alison Gaines
 Andrew Lu AM
 Annie Medley
 Ashley Yihsin Chang
 Barrie Le Pley
 Carmen Lawrence
 Cassandra Lake
 Craig Dalton
 David Downie
 Deena Appleby
 Di Ingelse
 Dominique Monteleone
 Gary Mack
 Grace Crogan
 Graham Hay
 Greg Mawer

Helen Carroll
 Helen Cook
 Henry Boston OAM
 Ingrid Puzey
 Isaak Karagoglou
 James Boyd
 Jan Stewart
 Jane King
 Janet Holmes à Court AC
 Jessica Machin
 Jim Cathcart
 John Barrington
 Jude Van der merwe
 June Moorhouse
 Kate Parker
 Kim Jameson
 Liesbeth Goedhart
 Margaret Seares AO
 Margrete Helgeby Chaney
 Mark Clapham
 Mary-Ellen King
 Max Hipkins
 Mollie Hewitt
 Monique Beaudoire
 Morgan Solomon
 Paul Nielsen
 Paula Silbert
 Peter Kift
 Phil Thick
 Pippa Davis
 Rania Ghandour
 Rick Heath
 Sam Walsh AO

Shane Colquhoun
 Stephen Bevis
 Tabitha McMullan
 Tegan Patrucco
 Terri-ann White
 Terry Grose
 Vince Cargeeg
 Vivienne Glance
 Warwick Hemsley AO

INDEPENDENT ARTISTS

Alex Desebrock
 Amy Welsh
 Christopher Young
 Daisy Sanders
 Geoffrey Lancaster
 Humphrey Bower
 Juliana Areias Vasconcellos Mendes
 Kathryn Preston
 Libby Klysz
 Michelle Hall
 Oron Catts
 Ryan Marano
 Sally Richardson
 Sam Nerida
 Sophie Curtis
 Steve Berrick
 Tracie Walsh
 Vanessa Woolley
 Vivienne Robertson
 Zoë Atkinson

PORTFOLIO (ASSOCIATE)

Art Gallery of Western Australia
 Library Board of Western Australia
 Western Australian Museum

LOCAL GOVERNMENT (ASSOCIATE)

City of Albany (Vancouver Arts Centre & Town Hall)
 City of Belmont
 City of Bunbury
 City of Cockburn
 City of Fremantle
 City of Greater Geraldton
 City of Joondalup
 City Of Mandurah
 City of Perth
 City of Rockingham
 City of Stirling
 City of Vincent
 Goolugatup Heathcote (City of Melville)
 North Metropolitan TAFE
 Shire of Broome
 Town of Bassendean

CORPORATE (ASSOCIATE)

Constable Care Foundation
 Copyright Agency
 Hesperia
 Localise Pty Ltd
 Media Super
 Minderoo Foundation
 Poolman Taxation Management
 Tempo Tax and Accounting
 Wicked Strategies

INDIVIDUAL (ASSOCIATE)

Andy Farrant
 Clare Travis
 Dana Henderson
 Gene Tilbrook
 Linda Savage
 Matthew Blampey
 Moira Nigam
 Randal Humich
 Stephen Dawson MLC

STUDENT (ASSOCIATE)

Georgina Rowse
 Rebecca Bencivenni

HONORARY LIFE MEMBERS

Jan Stewart PSM
 Margaret Seares AO
 Sam Walsh AO
 Warwick Hemsley AO



Vancouver Arts Centre. City of Albany. Albany Weavers - Then & Now exhibition

Governance and Management

Our Board

The Chamber is an incorporated association, established in 2010. It is governed by a Board of Management of up to five selected and seven elected members. The Board's role is to determine the organisation's strategic direction and support the effective delivery of its strategic business plans by ensuring its good governance, compliance and ongoing performance improvement.

Our Board as at 30 June 2023



June Moorhouse
Chair
From December 2022



Ingrid Puzey
Deputy Chair



Jim Cathcart
Deputy Chair
Treasurer from May 2023



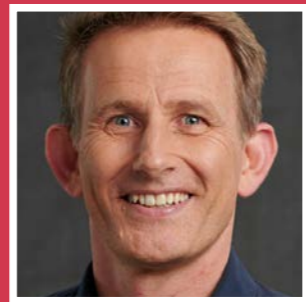
Libby Klysz
Secretary



Fiona Sinclair
Board Member



Dr Andrew Lu AM
Board Member



Rick Heath
Board Member
From November 2022



Paul Nielsen
Board Member
From November 2022

We thank our Board for all their hard work this year and acknowledge Board Members who retired during the year:

- Phil Thick, Chair (Retired December 2022)
- Jeremy Smith (Retired October 2022)
- Eva Grace Mullaley (Retired November 2022)
- Greg Mawer, Treasurer (Retired May 2023)

Board Meeting Attendance

| Description | Eligible to Attend | Attended |
|--|--------------------|----------|
| June Moorhouse (Chair from December 2022) | 6 | 6 |
| Ingrid Puzey (Deputy Chair from December 2022) | 6 | 5 |
| Jim Cathcart (Treasurer from May 2023) | 6 | 5 |
| Libby Klysz (Secretary) | 6 | 5 |
| Fiona Sinclair | 6 | 5 |
| Dr Andrew Lu AM | 6 | 4 |
| Rick Heath | 4 | 4 |
| Greg Mawer, Treasurer (Retired May 2023) | 4 | 4 |
| Paul Nielsen | 4 | 3 |
| Phil Thick (Chair until December 2022) | 2 | 2 |
| Jeremy Smith (Retired October 2022) | 2 | 2 |
| Eva Grace Mullaley (Retired November 2022) | 2 | 0 |

Finance, Audit and Risk Committee

- Jim Cathcart (Chair from May 2023)
- Dr. Andrew Lu AM
- Rick Heath (From November 2022)
- Natalie Norella
- Kim Jameson (Until May 2023)
- Greg Mawer (Chair until May 2023)
- Jeremy Smith (Until October 2022)

Public Fund Committee

- Dr. Andrew Lu AM (Chair)
- Libby Klysz
- June Moorhouse
- Paul Nielsen (From November 2022)
- Kim Jameson (Until May 2023)

Nominations and Diversity Committee

- June Moorhouse (Chair)
- Ingrid Puzey
- Fiona Sinclair
- Phil Thick (Until December 2022)
- Paul Nielsen (From November 2022)
- Eva Grace Mullaley (Until November 2022)

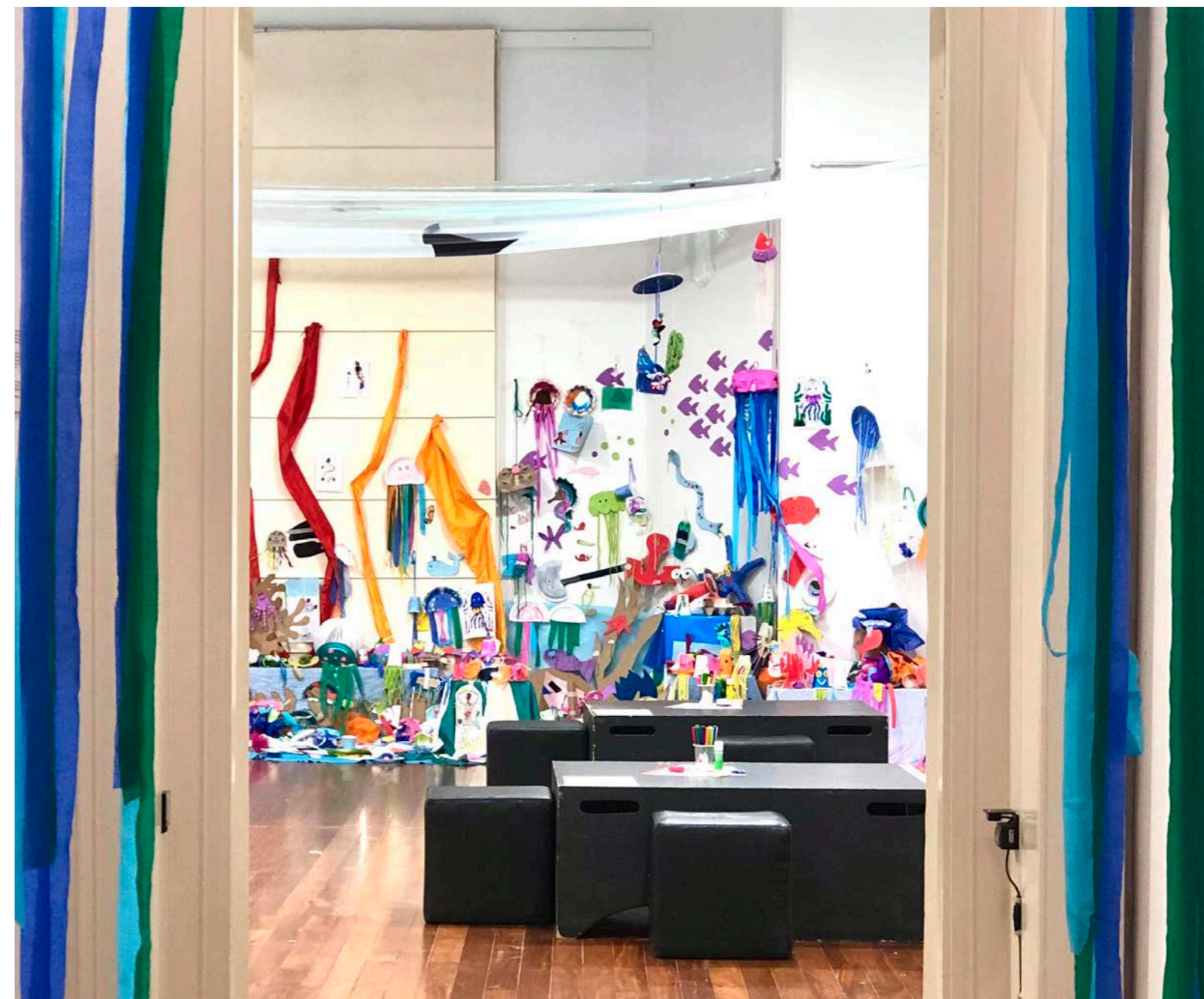
Our People

The Chamber's day-to-day operations are managed by the Executive Director. The Executive Director was supported this year by the Business Administrator, Communications and Engagement Manager and Sector Capacity Building Program Manager.

- Kim Jameson, Executive Director (Until May 2023)
- Natalie Norella, Business Administrator
- Ryan Sandilands, Communications and Engagement Manager (Until December 2022)
- Dr Christine Scoggins, Sector Capacity Building Program Manager (Until November 2022)
- Laretta Davies, Communications and Engagement Manager (Until April 2023)

All of us at the Chamber wish to acknowledge the significant contribution made by Executive Director Kim Jameson during her time with the organisation. Thank you Kim!

Image: Rainforest of the Sea. Vancouver Arts Centre. City of Albany



Financial Report

Statement of Profit or Loss

For the year ended 30 June 2023

| | 2023 | 2022 |
|---|----------------|------------------|
| Revenue | | |
| Grants | 499,690 | 151,661 |
| Membership | 46,096 | 52,160 |
| Corporate Income | 60,930 | 90,740 |
| Events Income | 20,800 | 29,820 |
| Donations | 10,100 | 11,970 |
| Interest Income | 124 | 122 |
| Other Income | - | (331) |
| Total Revenue | 637,739 | 336,142 |
| Expenditure | | |
| Employee benefits expense | | |
| Wages & Salaries | 258,009 | 294,713 |
| Contractors | 19,133 | - |
| Superannuation | 25,724 | 27,963 |
| Employee benefit provisions | (6,236) | (8,279) |
| Other expenses | 172 | 9,720 |
| Total Employee benefits expense | 296,801 | 324,089 |
| Event Expenses | 106,867 | 60,283 |
| Project Claims | 103,502 | - |
| Depreciation Expense | 4,241 | 2,774 |
| Other Expenses | 80,719 | 75,822 |
| Total Expenditure | 592,131 | 462,968 |
| Surplus / (deficit) for the year | 45,609 | (126,826) |

Statement of Financial Position

For the year ended 30 June 2023

| | 2023 | 2022 |
|--|----------------|----------------|
| Assets | | |
| Current Assets | | |
| Cash & Cash Equivalents | | |
| Bankwest Cheque Account | 356,614 | 196,705 |
| Bankwest Public Fund | 62,977 | 47,957 |
| Bankwest Term Deposit (CC) | 6,421 | 6,357 |
| Bankwest Term Deposit (LSL) | 20,000 | 20,000 |
| TFN Tax Held | - | 468 |
| Bankwest Mastercard | (332) | (541) |
| Total Cash & Cash Equivalents | 445,680 | 270,947 |
| Trade and Other Receivables | - | 198,539 |
| Total Current Assets | 445,680 | 469,486 |
| Non- Current Assets | | |
| Plant and Equipment | 394 | 4,636 |
| Total Non-Current Assets | 394 | 4,636 |
| Total Assets | 446,074 | 474,122 |
| Liabilities | | |
| Current Liabilities | | |
| Trade and Other Payables | 47,695 | 41,517 |
| Provisions | | |
| Superannuation Payable | 6,672 | 6,941 |
| Wages Payable | - | (2,398) |
| Annual Leave | 2,469 | 8,705 |
| Total Provisions | 9,142 | 13,248 |
| Other Liabilities | | |
| Grants in Advance | 289,658 | 326,690 |
| Membership Fees in Advance | 400 | 29,685 |
| Event/Tickets/Registrations in Advance | - | 9,411 |
| Total Other Liabilities | 290,058 | 365,787 |
| Total Current Liabilities | 346,895 | 420,552 |
| Net Assets | 99,179 | 53,570 |
| Equity | | |
| Retained Earnings | 99,179 | 53,570 |
| Total Equity | 99,179 | 53,570 |

Statement of Cash Flows

For the year ended 30 June 2023

| | 2023 | 2022 |
|--|----------------|------------------|
| Operating Activities | | |
| Cash receipts from other operating activities | 646,343 | 340,252 |
| Cash payments from other operating activities | (613,878) | (472,042) |
| Net Cash Flows from Operating Activities | 32,464 | (131,790) |
| Investing Activities | | |
| Purchase of plant and equipment | - | (5,597) |
| Net Cash Flows from Investing Activities | - | (5,597) |
| Financing Activities | | |
| Other cash items | 142,268 | 3,101 |
| Net Cash Flows from Financing Activities | 142,268 | 3,101 |
| Net Cash Flows | 174,733 | (134,286) |
| Cash and Cash Equivalents | | |
| Cash and cash equivalents at the beginning of period | 270,947 | 405,233 |
| Net change in cash for period | (174,733) | 134,286 |
| Cash and cash equivalents at end of period | 445,680 | 270,947 |



Circus WA. Disability program. Photo by Tashi Hall



**THE CHAMBER
OF ARTS AND CULTURE**
WESTERN AUSTRALIA



WA Museum Boola Bardip James Street (c)PeterBennetts

The Chamber of Arts and Culture WA Incorporated

ABN 83 149 126 786

 PO Box 7065, Cloisters Square WA 6850

 www.cacwa.org.au

 admin@cacwa.org.au